



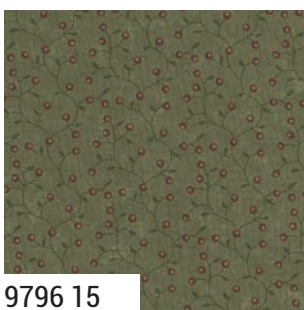
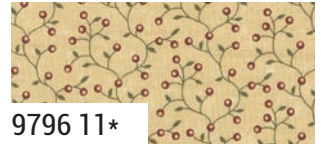
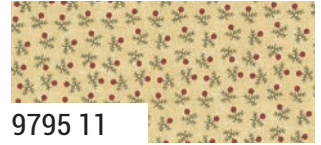
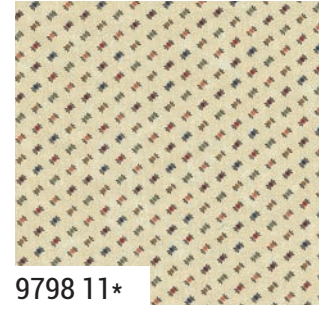
Wheatland

Kansas Troubles Quilters

Welcome to Wheatland! The featured fabric in this line tells the story of summers in Kansas and all across the Midwest. When I look out my back window, the wheat stalks are gently bending in the breeze with an assortment of wildflowers scattered along the fence line. The scene is a living painting of nature's bounty. I've added smaller prints of wheat, flowers, vines, and berries to round out this ode to summer. A classic KT palette of warm reds, golds, pumpkins, purples, greens, blues, and blacks contrast with an assortment of soft tans to create a lovely collection of fabrics for your next quilting project. Come with me to Wheatland and surround yourself with the natural beauty of the countryside.



Wheatland Kansas Troubles Quilters



moda **AUGUST DELIVERY**

Wheatland Kansas Troubles Quilters



9793 16



9797 16



9792 16*



9790 13*



9794 13



9797 13



9793 13*



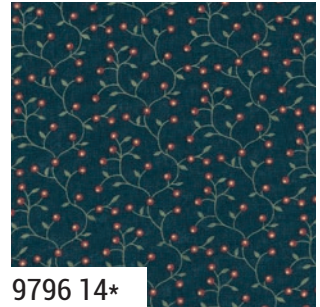
9791 13



9790 14*



9791 14*



9796 14*



9793 14



9794 14



9798 19*



9793 19*



9792 19



9790 19*

9790

Asst.
15

Asst.
10

Low Cal
10

AB

F8

JR

LC

MC

PP

AUGUST DELIVERY

*40 Prints *100% Premium Cotton
Precuts include all 40 skus.

Wheatland Kansas Troubles Quilters



KT 22024 Summer Harvest 17" x 17"



KT 22024 Wheat Star 17" x 17"



Harvest Lap 80" x 96" AB Friendly



Harvest Wall Hanging 42" x 42" LC Friendly

KT 25146 Harvest - 3 Sizes: King, Lap & Wall Hanging

Wheatland Kansas Troubles Quilters



KT 25145 Wheatland Pillow Cover 16" x 24"



Lap 72" x 84" JR Friendly



Runner 19" x 50"

KT 25145 Wheatland - 3 Projects



KT 55155 Summer Fields 34" x 34" PP Friendly



KT 33008 Golden Grain 24" x 24" MC Friendly