

BLUEBIRD PARK



KATE & BIRDIE PAPER CO.



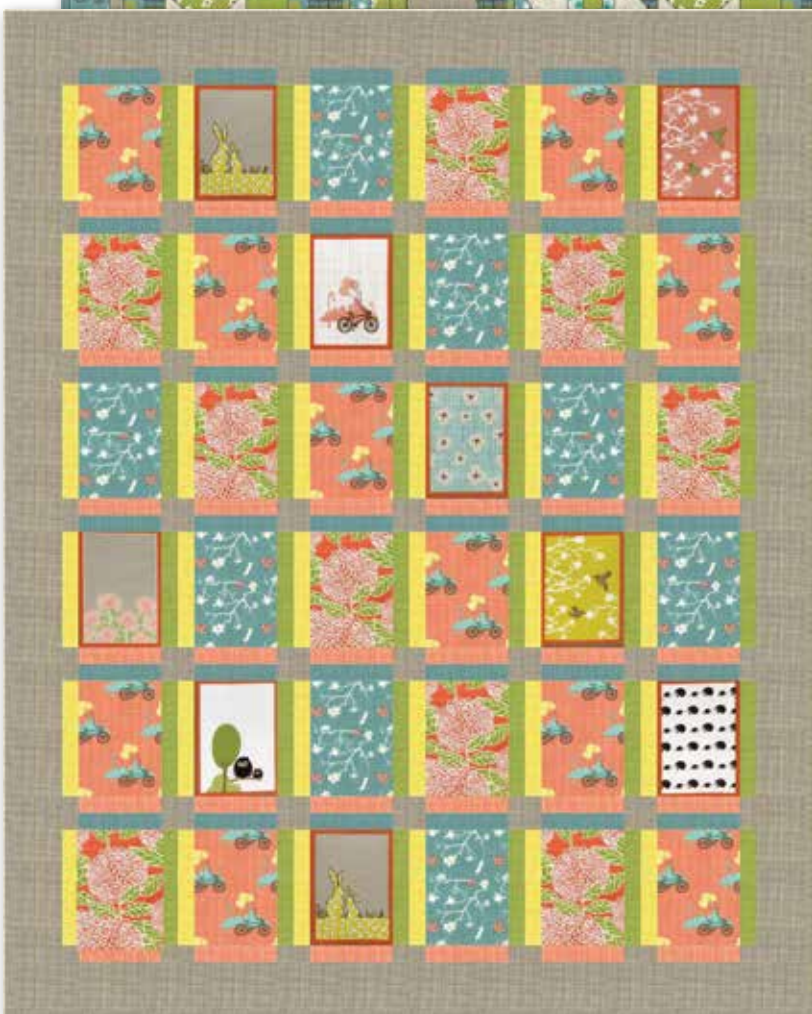
1



№ 13106 16*
Sunrise



№ 13101 18*
Post Sunrise



2

1 CHD 1308
CHD 1308G
Bunnies in the Park
Size: 63"x80"

2 CHD P006
CHD P006G
Mod Postcards
Size: 48"x60"



№ 13108 19
Sunrise



№ 13104 17
Stone



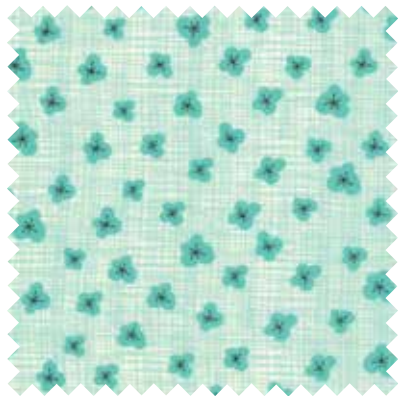
№ 13108 22*
Stone



№ 13107 15*
Stone



№ 13102 13*
Stone



№ 13106 11*
Fountain



№ 13101 17*
Post Fountain



№ 13104 18*
Lamp Post



№ 13102 16
Lamp Post



№ 13103 16
Lamp Post



№ 13108 23
Lamp Post



№ 13105 16*
Lamp Post



№ 13106 18
Lamp Post



№ 13101 15*
Tangerine



No 13106 19*
Grass



No 13108 18
Grass



No 13101 16
Tangerine



No 13103 15*
Tangerine



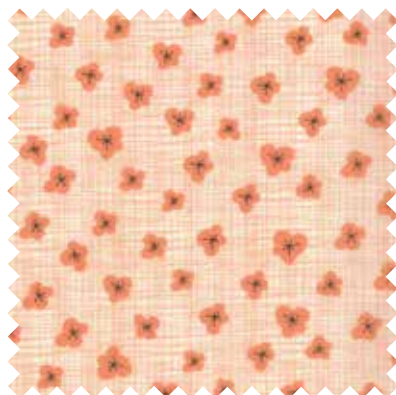
No 13105 15*
Tangerine



No 13107 17*
Tangerine



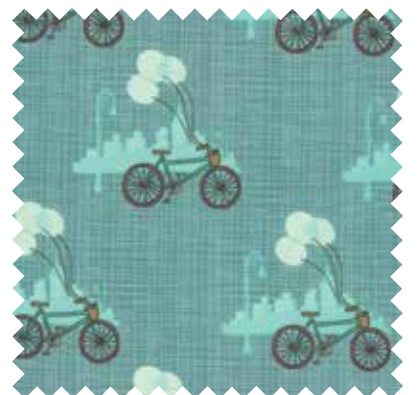
No 13108 21*
Tangerine



No 13106 14*
Peach



No 13102 14
Teal



No 13103 14*
Teal



No 13104 19*
Teal



No 13105 12
Teal



No 13107 16
Teal



No 13108 17*
Teal



No 13100 14
Tangerine

Panel 24"x45"
Postcards approx. 5"x7"
Tags approx. 3"x5"
Pillow Panel approx. 22"x22"



No 13100 13*
Teal



No 13100 15*
Lamp Post

1. How did you and Moda get hooked up?

We met the lovely ladies from Moda at the 2012 National Stationery Show, an annual tradeshow we exhibit at each year for the paper goods we design and manufacture. They first took note of our wrapping paper and how perfect it would be interpreted as textiles, which is exactly what I had in mind (and hoped for) in designing our wrapping paper collection.

2. How do you translate an idea into a fabric line?

Most of my ideas are sketched out on paper first. I always keep a few sketchbooks and my pencil case with me, so I'm ready when inspiration hits. Most of our current fabric designs for Moda began as paper products like boxed note card sets or wrapping paper for Kate & Birdie, and many of which I knew would make gorgeous fabric one day if we were lucky enough to design a collection. Our customers would often request to have our wrapping paper designs available in textiles, for bedding and cushions for example, so I have been thrilled to work with Moda and have the opportunity to expand into fabrics. The transition from wrapping papers to fabrics has been ideal as they both involve repeats and pattern design.



3. What gets your heart racing?

Seeing a design I've had in my head begin to take shape on my computer screen is exciting. Sometimes it's natural and happens quickly, and other times it requires several drafts and approaches – until I know in my gut that it feels right. Then I begin to envision it on fabric and in the form of toss cushions or bedding or drapes or quilts and I can't wait to see the finished result! The entire creative process start to finish is always exciting and never the same. It's a dream come true to do what I do for a living and I'm so grateful for it. On days when we get to finally see our designs for the first time in a tactile form like fabrics feels like Christmas.

4. Do you work out of your home or do you have a separate design studio?

We have a bright, light-filled loft studio on the top floor of an old sewing factory in the Exchange District of Winnipeg, Canada. It's a charming old neighborhood, reminiscent of Chicago and always a source of inspiration. Our studio is filled with our paper goods, which are designed and produced here, and sold through 1000 specialty retail shops worldwide. We keep our space clean and white and allow our colorful wrapping papers and notebooks and note cards to add the color and texture to the space. It's a happy place. I have my own small office inside the studio, so when I need to focus on design, I can shut the doors, turn on some music and get to work.